



Bi-Monthly Publication of the
Singapore Maritime Officers' Union
and Wavelink Co-operative

MCI (P) 051/11/2017

FEB
MAR
2018

ROADMAP TO DRIVE MARITIME SINGAPORE FORWARD



TRIPARTITE
EFFORTS



EXPAND AND
DEEPEN MARITIME
CLUSTER



STRENGTHEN
CONNECTIVITY



DEVELOP
MARITIME
INNOVATION



BOOST FUTURE-
READY MARITIME
WORKFORCE



ESTABLISH
SINGAPORE AS IMC

LONG
MEMBERSHIP
AWARDS 2017

03

YOUTH LEARN
FROM INDUSTRY
VETERANS

16

NEW HEALTH
GADGETS AT
MARINERS'
LOUNGE

26

CONTENTS

FEBRUARY – MARCH 2018



Find us on



Young SMOU Members



SMOUnews



Smousg



Smou Sg

MakeWAVES

- 03 Long Membership Awards 2017
- 05 Getting into the Holiday Spirit at MTSS Drop-In Centre
- 06 Positioning Maritime Singapore for the Future
- 08 NTUC-PAP Symbiotic Relationship is Crucial
- 09 Women Transport Workers Call for Action
- 10 Pledging to Get More Youth Workers Involved

IR

- 11 Keeping Pace with Changes in the Maritime Unions
- 12 Strengthening Rapport with JSU at Summit Meeting
SMOU and TSFA Foster Closer Relations
- 13 Extending Season's Greetings Out to Sea
- 14 Unity is the C.U.R.E

YSMOU

- 16 Youth Learn from Maritime Industry Veterans
- 18 A Heart for the Community

MemBUZZ

- 20 Family Connection – Festive Celebration
- 21 Senior Citizens' Trip to Bandung
- 22 Wrapping Up the Year with Family Connection
- 23 Movie Adventures with Jumanji
- 24 Kids' Holiday Programme @ Pizza Hut
- 25 \$6.50 Monthly Special Continues in 2018
- 26 New Health Gadgets at Mariners' Lounge
- 27 Visiting the Families of Our Late Members

SPOTLIGHT

- 28 Don't Slip Up

WaveLINK

- 29 Notice for Seafarers' Provident Fund
- 30 Training Calendar
- 31 WMI Courses accredited by ClassNK
Taking CadetsPlus to the Next Level
- 32 WMI Explores Collaborations in China
- 33 Job Fair for TETA Cohort 3
- 34 Lighthouse Bistro – The Place to Be
- 36 ITF 44th Congress Singapore

Wavelink Building

75 Jellicoe Road #02-01
Singapore 208738

Tel : [65] 6396 0123

Fax : [65] 6339 5436

Website : www.smou.org.sg

Operating Hours:

Mon to Fri : 9am to 6pm
(till 8pm on first Friday of every month)

Lighthouse Bistro Operating Hours:

Mon to Sat : 12pm to 10.30pm

Long Membership Awards 2017

A total of 314 union and Executive Committee members were added into the “hall of fame” of SMOU’s Long Membership Awards (LMA). With the ceremony held at Lighthouse Bistro on 21 November 2017, more than 90 awardees turned up for the ceremony. They were honoured for having reached a significant milestone of loyalty in their union membership.

What was special this year – for the first time, the number of 40-year awardees hit a record 49, among them were SMOU President Capt Robin Foo and Emeritus General Secretary (EGS) Thomas Tay. On the President and EGS, SMOU General Secretary (GS) Mary Liew commended,

“They put in perpetual plans to create positive rapport with the government and the shipping companies, and develop good industrial relations between seafarers and their employers.”

Ms Liew thanked the members for living out the union’s core value of ‘Caring and Sharing’ by donating their U65+ rebates to the Make-A-Wish Foundation (Singapore) Ltd and granting a 17-year old beneficiary’s wish for a motorised wheelchair. Expressing her hopes for the members to make a difference in the lives of the less fortunate, she encouraged them to continue supporting this meaningful cause.

She highlighted: **“SMOU is where it is today because all of you support and believe in the union. Thank you and we look forward to better years ahead.”**

“Receiving the LMA is a tremendous milestone. The union instills a sense of belonging in me and provides a platform to give back to society and the maritime industry.”

▶ R.Sridharn, SMOU member of 20 years



“There is job security and welfare protection under SMOU. We have benefitted greatly from the solid groundwork laid by the union leaders. We also get to network and forge closer bonds with our colleagues through SMOU-organised events.”

▲ Ramlie Mohd, SMOU member of 40 years





“ Brother Thomas Tay introduced me to SMOU, which enabled me to find a job onboard the vessel Sankuru, which was covered under SMOU's first foreign-going Collective Agreement with Transocean Liners. The union takes care of members and will step in to defend our interests if there are disputes with shipping companies. SMOU has come a long way, and I hope it keeps up the good work!

▲ Jimmy Ang (2nd from right), SMOU member of 40 years



SMOU GS Mary Liew catching up with long-time members, including some from the Exco.



Getting into the Holiday Spirit at MTSS Drop-In Centre

In appreciation of seafarers' hard work during the festive season, close to 35 seafarers gathered at the Mission to Seafarers Singapore (MTSS) International Drop-in Centre at Jurong Port on 15 December and heartily dug into the festive spread specially prepared by SMOU's Lighthouse Bistro. Joined by representatives from Young SMOU, MTSS and Jurong Port, the night was filled with festive music, joyous singing and much laughter. The high spirits continued into the night as the seafarers exchanged stories of their seafaring adventures or enjoyed some R&R in a cosy atmosphere whilst playing a game of pool or darts.

When the Young SMOU members learnt that some seafarers were unable to step away from their work to join the gathering, they surprised the crew by bringing food and gifts onboard the vessel to share the festive cheer and have a merry catch-up with them.

The gathering was made complete as everyone came together to wish the December babies a happy birthday and all seafarers a wonderful holiday season.

“ I've been sailing for 14 years and it can get lonely out at sea. Such events remind us that we are not alone. Thank you, SMOU!

► Thet Wai Aung, Chief Officer



“ I was overjoyed to be able to attend the gathering, since I'll be working on Christmas day. My birthday is on the same date as the event, so the birthday celebration was a pleasant surprise.

◀ Li Hui, 3rd Engineer



Tripartite partners at the media briefing before the ITM launch.

Positioning Maritime Singapore for the Future

The dynamic and living blueprint driving Singapore's vision to be a Global Maritime Hub for Connectivity, Innovation and Talent is creating a wave of optimism in the maritime industry.

The Sea Transport Industry Transformation Map (ITM), developed by Maritime and Port Authority of Singapore (MPA) in partnership with the industry, unions and various government agencies was officially launched by Senior Minister of State for Transport and for Health Dr Lam Pin Min on 12 January. It is packed with enhanced and new initiatives to develop Singapore's next-generation port and strengthen our international maritime centre (IMC). The aim is to expand the sector's value-add by \$4.5 billion and create over 5,000 good jobs by 2025.

“ The strategies and targets set out by the ITM are undoubtedly ambitious. But with the strong partnership from the industry, the unions and government agencies such as SkillsFuture Singapore and Workforce Singapore, I am confident that we can achieve our vision for Singapore to be a Global Maritime Hub for Connectivity, Innovation and Talent.

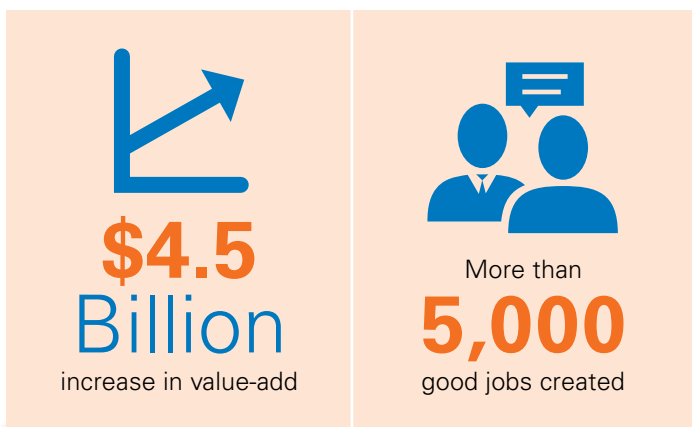
▲ Dr Lam Pin Min, Senior Minister of State for Transport and for Health

“ The development of the Sea Transport transformation map is another testimony of the strong alignment between the government and industry in Singapore that has been and will continue to be the key for the success of Maritime Singapore.

▲ Mr Esben Poulsen, President of the Singapore Shipping Association

“ With the industry changing at such a rapid pace, it is critical that workers constantly re-skill and up-skill themselves to remain relevant and future-ready. The Labour Movement is committed to working closely with our tripartite partners to ensure our workers have the right skills to support growth in the maritime industry, as well as deliver concrete action plans to realise the benefits of the Industry Transformation Map for our working people.

▲ Ms Mary Liew, President of the National Trades Union Congress



Some key strategies laid out in the ITM include:

- Developing a future-ready maritime workforce
- Driving growth through productivity enhancements and innovation
- Strengthening connectivity and inter-linkages

For Workers

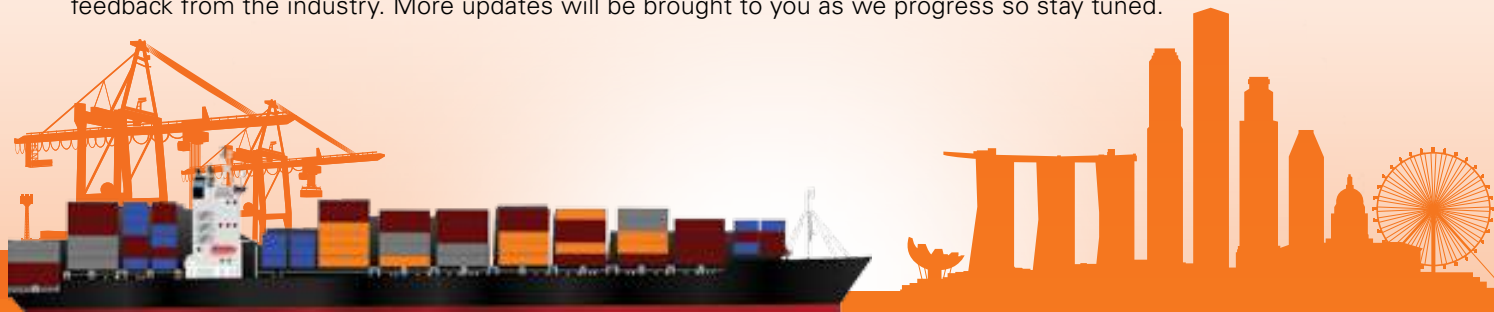
To help our workers achieve their potential, new maritime programmes, such as the Earn and Learn Programmes for seafarers and port operations executives launched by MPA in 2016, will continue to be developed to meet the needs of the industry. This year, two maritime SkillsFuture Earn and Learn programmes will be open to graduates from the Tripartite Nautical Training Award (TNTA) and Tripartite Engineering Training Award (TETA) programmes.

For Employers

To support maritime companies to train, develop and retain a local core of seafarers to fulfil the companies' talent and manpower requirements, funding support for Taskforce – Sea (TF-Sea) measures under the Maritime Cluster Fund is extended for another three years until 2020. This includes newly added areas like data analytics, cyber security and soft skills like communication and executive leadership.

Maritime employees can also now be deployed longer for more meaningful overseas or shipboard training attachments within the maximum supportable duration, extended from 6 to 12 months under the MCF overseas attachment programme.

As NTUC President and SMOU GS Mary Liew has said, the ITM is not cast in stone, and will continue to evolve with feedback from the industry. More updates will be brought to you as we progress so stay tuned.



Senior Minister of State for Transport Dr Lam Pin Min (3rd from right) launched the Sea Transport ITM together with industry partners

Credit: The Singapore Maritime Foundation



NTUC-PAP Symbiotic Relationship is Crucial

A large delegation of some 250 NTUC leaders from the NTUC Central Committee and various unions attended the People's Action Party (PAP) Awards and Convention. Among the activists were NTUC President and SMOU General Secretary Mary Liew, Secretary Gwee Guo Duan and Membership Executive Shobana Balachandran.

Held on 19 November 2017 at Big Box, the event saw the renewal of the call by PAP Secretary-General and Singapore Prime Minister (PM) Lee Hsien Loong to strengthen the symbiotic ties between the ruling PAP and the Labour Movement (LM).

In his speech, PM Lee pointed out that the PAP and NTUC have been together through many difficult times, and because they stuck together, Singapore has prospered and people's lives have improved.

"In the coming years, this symbiotic relationship will be even more crucial. Workers will need support to cope with the economic disruption... Workers will need all the help that unions can give them. Unions will need to work with the PAP Government, so that we can develop effective policies to help workers, enable Singaporeans to weather the changes, and do the new jobs better," said PM Lee.

In its statement, NTUC also sounded the same message that the current economic situation requires both the ruling PAP and LM to strengthen their symbiotic ties more than ever: "Successful generations of Labour Movement and PAP leaders must share the same understanding of this symbiotic relationship and work together to help our workers overcome the economic challenges."

To further nurture the symbiotic relationship, PAP Members of Parliament and various ministers and political office holders will be taking on advisor roles in unions and U Associates.

"This is a testimony to the unwavering commitment of the PAP leaders to be always on the side of our working people," NTUC highlighted.



(L-R) SMOU Secretary Gwee Guo Duan, GS Mary Liew, NTUC SG Chan Chun Sing and Membership Executive Shobana Balachandran.



Women Transport Workers Call for Action



At the International Transport Workers' Federation (ITF) Women Transport Workers' Conference from 7 to 8 November 2017, some 250 women transport representatives from ITF unions met together in Marrakech, Morocco, where they focused on the ongoing ITF campaign to tackle violence against women and affirmed their commitment to climate justice. This included the push to achieve a new ILO convention on violence and harassment against women and men in the world of work.

Their timely message was sent to United Nations climate change event COP23 (Conference of the Parties) which was running concurrently in Bonn, Germany. The participants concluded with the statement that reads:



“ The ITF women transport workers' conference calls for the ambitious and effective expansion of public transport on a global scale; the promotion and support of the environmental, social and economic benefits of mass transport; an improved access to mobility services and a reduction of congestion and pollution in the cities, seas and air as caused by all land, air and sea transport; collaboration with trade union organisations, including women's representatives, in the decision and processes related to public transport policies, comprising decent and safe work and ensuring the working and organising rights of male and female workers.”

Representing SMOU at the conference, Women's Committee member Annie Sng spoke about how the ground-breaking Tripartite Nautical Training Award (TNTA) Programme is giving Singaporeans a chance to choose seafaring as a career.

Sister Annie shared with the conference participants on how the programme has attracted females, with inspiring examples - a young woman bartender Fae who realised that her career progression as a bartender was limited; and then 16-year-old Sze Yi who was determined to pursue a sailing career at a young age. Both are in the pathway to sail as third officers on board ships and can work towards being future captains.

She also drummed up enthusiasm for the upcoming ITF Congress which will be held from 14 to 20 October 2018 at Suntec Singapore Convention Centre.

Pledging to Get More Youth Workers Involved

ITF Young Seafarers' Seminar

With more than 70 per cent of International Transport Workers' Federation's (ITF) affiliated unions having youth sections, it is imperative for young transport workers to have a clearer understanding of their roles and responsibilities.

Fifteen youth representatives from ITF affiliates worldwide, including Young SMOU Chairman Terence Tan, met up in London for the ITF Young Seafarers' Seminar to iron out these priorities.

During the seminar on 13 November 2017, Terence shared updates on the status of the upcoming ITF Congress to be held in Singapore in October, while ITF Youth Coordinator

Baker Khundakji spoke about the vision of ITF Youth and how youth workers can make a bigger impact on the congress.

The event also featured an in-depth review of the Seafarers' Section 2018-2023 work plan; a recap of the action plans set during the ITF youth conference in Buenos Aires; and brainstorming sessions on strategies to increase youth participation and engagement in ITF campaigns, as well as how to resolve work-related challenges faced by young transport workers. The youth also had discussions on how to increase ITF's presence and awareness among their fellow workers.





Keeping Pace with Changes in the Maritime Unions

Innovating new ideas for campaigns, influencing global and regional policies, and preparing transport workers for digital changes in the industry – these were some areas of focus at the International Transport Workers' Federation (ITF) Seafarers Section meeting and Fair Practices Committee (FPC) meeting.

Held from 14 to 16 November 2017, SMOU Emeritus General Secretary Thomas Tay and Industrial Relations Assistant Manager Terence Tan attended the meetings, which involved a thorough discussion of ITF's work plans to help workers keep pace with technology for the next five years and to aid membership growth, as well as ideas and initiatives to encourage more female participation in the maritime industry.



SMOU EGS Thomas Tay sharing his views with the delegates during the meetings.

Strengthening Rapport with JSU at Summit Meeting

With the mutual intention to safeguard seafarers' rights by working together to strengthen the bilateral relationship to the next level, SMOU, together with Singapore Organisation of Seamen (SOS) sat down with All Japan Seamen's Union (JSU) for a summit meeting in Japan from 30 November to 1 December 2017.

The high level delegation engaged in discussions to further strengthen Asian solidarity within the ITF and bridging the gap to align and bring closer the relationship between the Singapore and Japan unions. The delegation also talked about how unions have to adapt

to industry changes to stay strong and relevant for the members.

Strategies to ensure unions could continue to work harmoniously without affecting the seafarers in different

regions were put forth for consideration. The delegation also looked into working together on future projects for enhancing the welfare of seafarers and also facilitating mutual understanding on industrial relations issues.



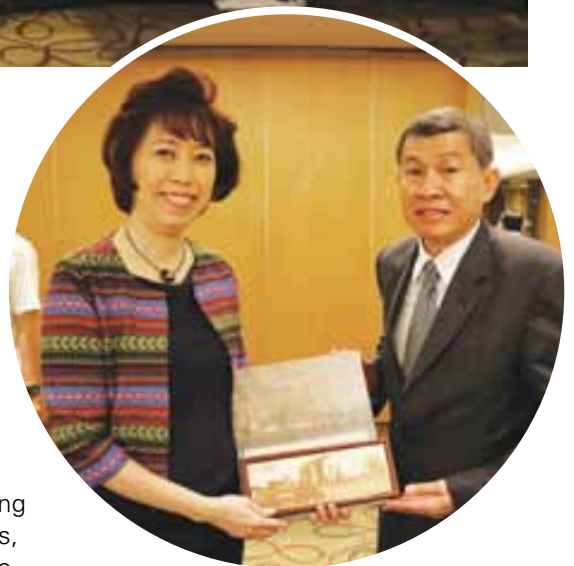
SMOU and TSFA Foster Closer Relations

Ties between unions transcend national boundaries, as shown by SMOU's learning journey to the Thai Seafarers Association (TSFA) on 23 November 2017. It culminated in SMOU and TSFA signing a Bilateral Arrangement to foster closer relations.

At the meeting in Thailand, the SMOU Executive Committee members led by President Capt Robin Foo, General Secretary (GS) Mary Liew and Emeritus GS Thomas Tay were warmly welcomed by the TSFA team, which included President Nopadol Kaewsuwan, Vice-Presidents Capt

Phasan Thmaparj and Capt Somchart Krailassuwan, and Member Registrar Capt Preedapon Patade.

The union delegates took the valuable opportunity to share constructive knowledge and gain insight into different approaches to maritime-related issues. Both parties explored training collaborations for the Thai members, and also agreed to work together to help seafarers in Thailand and around the region attain good jobs and improve their lives.



▲ SMOU GS Mary Liew presented a token of appreciation to TSFA President Nopadol Kaewsuwan.

Extending Season's Greetings Out to Sea

Last December, SMOU brought joy to seafarers whose ships are docked in Singapore's ports, presenting them with gifts and festive delicacies like roast turkey.

The ship visits not only strengthened the sense of camaraderie, they enabled the union to find out about the crews' well-being. The visits onboard also gave the SMOU team the opportunity to update the seafarers on the extended deadline for the withdrawal of the Seafarers' Provident Fund, till December 2021.

SMOU appreciates the sacrifices and hard work that seafarers put in during year-end holiday seasons, to ensure that their vessels' cargo arrive at the next port on time. SMOU wishes all seafarers around the world safe voyages and a Happy New Year!



APL Chongqing



APL Houston



Wan Hai 517

“ A big thank you to Capt Foo and the SMOU team for remembering us and other seafarers who are working throughout the holidays, and presenting us with the turkey from Lighthouse Bistro.

■ APL Houston's crew

“ We're grateful to SMOU for taking the time to visit us. It was also good to hear that the SPF withdrawal period has been extended so that more members can come forward to withdraw their SPF.

■ Maersk Cardiff's crew



Maersk Cardiff



Wan Hai 302



Unity is the C.U.R.E

Tripartite ties were celebrated at SMOU's Company Union Rapport Exercise (C.U.R.E) cocktail on 21 December.

Attended by more than 140 representatives from the maritime industry, including government officials and representatives from shipping companies, the event at Lighthouse Bistro enabled them to catch up with the latest maritime news and build bigger and stronger networks.

Expressing her gratitude to the shipping community, SMOU General Secretary Mary Liew said: "We have a lot to be thankful for. Wavelink Maritime Institute (WMI) has been awarded the EduTrust certification for the next four years, having achieved the stipulated standards. Moving forward, we will be able to better assist shipping companies and train quality seafarers."

“ *The casual setting encourages stronger personal bonding and meaningful exchanges among the participants, which is essential for building strong bonds in the shipping community. Keep up the good work, SMOU.*

▲ Capt Daknash Ganasen (3rd from right), MPA Director (Shipping) & Director of Marine

“ *This is such a great opportunity to get to know people from different constituents of the maritime industry in a relaxed atmosphere. A lot of thought and effort went into organising this event.*

▲ Capt Amin Jain (6th from right), Unix Line Pte Ltd Managing Director





A surprising addition to the menu this year!





Youth Learn from Maritime Industry Veterans

Some 120 participants were given the opportunity to network at the Devan Nair Institute during the Young Mariners' Networking on 8 November 2017.

Students from Singapore Maritime Academy (SMA), Institute of Technical Education (ITE) and cadets from Wavelink Maritime Institute (WMI) were joined by guests from the Maritime and Port Authority of Singapore (MPA), NTUC U Future Leaders and Synergy Marine Pte Ltd.

SMOU President Capt Robin Foo called for the youths to learn from each other and establish strong comradeship. Placing emphasis on the significance of building a cohesive spirit in the shipping industry, he added: "Get to know more like-minded people and broaden your maritime knowledge, so you will be inspired to contribute more to the sector."

Learning first-hand from industry experts as they shared their knowledge gave the youth a deeper understanding of maritime-related issues and what to expect when they enter the industry. A Q&A session after each sharing further sparked the youths' curiosity and clarified their doubts.



Mrs Mary Seet-Cheng, IMO Maritime Ambassador for Singapore, spoke about the various pathways for a rewarding maritime career.



Mr Michael Tan, Caterpillar Marine, Marine Asset Intelligence Fleet Advisor, gave his perspectives about how technology is driving change in the maritime industry.



SMOU President Capt Robin Foo addressed the youth at the networking event.



Mr Sanjeev Namath, Alpha Ori Technology Holdings Pte Ltd Head of New Projects and R&D at Synergy Marine Group and Director of Singapore Operations, shared about how to prepare for and gear up towards maritime technology innovations.



“ *The talks were insightful as they exposed us to various technological advancements such as autonomous ships. The maritime industry is constantly evolving, so it will be an interesting experience to continue my journey as a mariner.*

▲ Bisri Ahmad, SMA student

“ *I was enlightened by the networking session. I got to meet industry veterans and learned how technological advancements are making life easier for mariners onboard.*

▶ Lay Wen Ting, ITE student



“ *Decades down the road, the maritime industry will be quite different from what it is now. This event made me realise just how big the sector is and the good career prospects that it offers.*

▼ Jonathan Anthony Lefort (3rd from right), Young SMOU member





A Heart for the Community

As part of SMOU's Corporate Social Responsibility (CSR) to nurture compassionate leaders and instill one of our core values of 'Caring and Sharing', over 20 Young SMOU volunteers set off for the Panti Asuhan Betesda Orphanage located in Batam, Indonesia.

On 11 November, they rolled up their sleeves and got to work building and assembling furniture, as well as cleaning the orphanage and giving the walls a fresh coat of paint. It also provided ample opportunity for them to spend time with the children in the orphanage.

The volunteers bolstered their efforts to make a difference to the orphans' lives by bringing donations of clothing and toys and necessities such as rice and biscuits.

The second day included a sharing session by SMOU Executive Committee member Roy Lee, which enabled the youth to understand more about the life of a seafarer.

“ It was heart-warming to witness the kids' happiness. I'm glad to have played a part in making their lives better. I also hope that the activity has inspired our Young SMOU volunteers to become mentally stronger and persevere in their journey in the maritime industry.

► Roy Lee, SMOU Executive Committee member (4th from left)



“ The trip was a life-changing experience which taught me the value of caring for the less privileged and the importance of self-motivation. I've also learnt to be more appreciative and confident.

▲ Syabilhan Siddiq Sulaiman (far left)



“ I got to know my peers better after the volunteer effort. We accomplished things for the kids through teamwork and mutual encouragement. Hardships are temporary, so stay positive and do not take things for granted.

▼ Divaker Balachandran (far left)





Family Connection – Festive Celebration

Infused with the colours and flavours of Deepavali and Hari Raya, the festive celebration on 28 October 2017 at Lighthouse Bistro attracted close to 90 SMOU members and families. Everyone savoured a mixed cuisine of Indian and Malay fusion fare.

The event was not only a gathering for many members and their families, but also a representation of SMOU's diverse cultures.



SMOU Executive Committee member Wong Jwee Huat (right) presented the lucky draw prize.

“ The most enjoyable and memorable part of the evening was the traditional kite-making game of “wau”. Everyone at the same table got creative. What I enjoyed about this event was the opportunity to learn about other ethnic cultures.

▲ Basant Pratap (6th from right), SMOU member of 3 years

“ It’s our first time attending this memorable event which provides a good platform for family bonding. The children had lots of fun watching the magic show and playing various games which were well-organised. The icing on the cake was when we won 2nd prize in the lucky draw!

▲ Chetan Chandrakant Kushte (3rd from right), SMOU member of 4 years





Senior Citizens' Trip to Bandung

A gathering of SMOU senior members and their families jet-setted in high spirits to Bandung, West Java, Indonesia from 19 to 21 October 2017.

The travellers visited Bandung's most famous tourist volcano, Mount Tangkuban Perahu and had splendid panoramic views of the huge crater. For entertainment and relaxation, the group was further taken to Ciater Hot

Springs, a local park where they relaxed and soaked their feet in the natural hot spring pool.

To complete the whole Bandung experience, the participants indulged in retail therapy at the factory outlets and malls, and savoured the flavours of local Sundanese cuisine.



Wrapping Up the Year with Family Connection

Over 180 SMOU members and their families got together at Orchid Country Club on 9 December for a fabulous time to end 2017.

The atmosphere was filled with festive joy and laughter, as families took fun shots with a reindeer mascot, enjoyed the tunes of Christmas carols and were kept entertained with stage games.

The event would not be complete without our favourite Santa Claus, who made a special appearance, presenting lucky draw prizes and posing for photos with members and families.



Light-hearted stage games kept the audience in smiles and laughter.

“ *The event is a great way to spend time together during the closure of the year. The event not only met its objective but also surpassed my expectations. I would definitely consider attending other family connections down the road as it really allows us to interact more as a family.*

► Mohammed Imran Kalam Chowdhury (in blue), SMOU member of 7 years



“ *My boys enjoyed the bubble show so much, they thanked me for bringing them here. I also reconnected with a few marine professionals, and we had the chance of meeting each other's families and made new friends in the process.*

► Nay Aung Khaing (far right), SMOU member of 5 years



“ *My family enjoyed the Family Connection, especially my daughter. The Christmas song competition was engaging. We really appreciate the hard work put in by SMOU to organise such family-oriented events.*

▲ Gabriel Wong (left), SMOU member of 29 years

Movie Adventures with **JUMANJI**

Some 550 SMOU members and their families as well as invited guests were in for a heart-pounding fantasy adventure during the SMOU Movie Special on 23 December, which featured "Jumanji: Welcome to the Jungle".

The guests included 160 single mothers and their kids from WeCare for U Project – part of the NTUC Women and Family Unit (WAF) who were also invited to the movie screening to enjoy some family bonding time as part of the 'Caring and Sharing' core values of SMOU.



SMOU GS Mary Liew and First Vice President Rahim Jaffar caught up with SPF Advisory Committee Member Capt Belal Ahmed (2nd from left) and his family.





Kids' Holiday Programme @ Pizza Hut

A pizza-making workshop held on 25 November 2017 had all the right 'ingredients' in a kids' holiday programme for more than 20 SMOU members and their children.

The kids had a first time eye-opening experiential tour of Pizza Hut's commercial kitchen. They could not wait to lay their hands on the pizza dough when it was time for pizza-making. Each had a blank 'canvas' where they could unleash their creativity in creating their very own pizza. At the end, everyone spared no chance in getting a few snapshots with their own masterpieces and savouring the results of their culinary skills.



“ What I like best about the programme is making my own pizza on the very soft dough! I made a Hawaiian pizza and it was delicious.

▲ 8-year-old Samanyu Mishra, son of SMOU member Sanjiv Mishra



“ It was really fun to decorate a pizza and add my favourite toppings. My brother and I really enjoyed the pizza-making activity.

▶ 9-year-old Atria Djie (middle), daughter of SMOU member Wilson Djie



\$6.50 Monthly Special Continues in 2018

Good news for all! Back by popular demand, the \$6.50 monthly special will continue for the third year.



SMOU members can look forward to a set lunch for just \$6.50* (U.P. more than \$40) at Lighthouse Bistro



Photos are for illustration purpose only

*For more terms and conditions, please visit www.smou.org.sg

New Health Gadgets at Mariners' Lounge

With good health being the key to a much happier life, it is important for our members to take charge of their own health and reduce the risk of chronic illnesses by developing better habits.

To encourage members to be responsible in looking after themselves well, SMOU will be introducing the following health gadgets for general use at the Mariners' Lounge (Wavelink Building, Level 2).

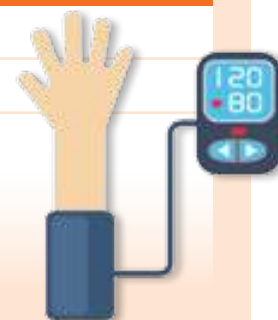
1. Blood Pressure Monitor

When was the last time you checked your blood pressure? Do you know in Singapore, you are considered to have high blood pressure if your reading is above 140/90mm Hg, which may lead to hypertension?

What defines high blood pressure?

Classification	Systolic (mm Hg)	Diastolic (mm Hg)
Normal	< 130	< 80
Pre-hypertensive	130-139	80-89
Hypertensive	≥ 140	≥ 90

Adapted from Singapore Heart Foundation website



2. Neeuro Senzeband

Coupled with the Memorie application, the Neeuro Senzeband consists of brainwave sensors that can measure the mental activity and capabilities of the user. Accessibility to brain-training games helps keep dementia and cognitive problems at bay.



3. Health Talks & Workshops

SMOU will be working closely with health providers such as ActiveSG to offer more health-based talks and workshops. Potential topics to be covered include the Ministry of Health's National Adult Immunisation Schedule (NAIS) and the importance of vaccinations, hypertension, diabetes prevention and care, active living and keeping fit.



Come and try out these new health gadgets at the Mariners' Lounge!

Visiting the Families of Our Late Members

In remembrance of our long-time members who have passed on, SMOU officials visited the families of our deceased members to touch base. They also presented the insurance payouts.



Chin Yong's son received the SMOU Death Benefit payout from President Capt Robin Foo and Treasurer Tan Hung Tat.

Chin Yong was a seafarer all his life from his teenage years. His son recounted how he enjoyed spending time with his friends from the seafaring community and continued to stay active in SMOU events, even in his old age. He passed away from colon cancer.



President Capt Robin Foo and Membership Committee Chairman Pachan Pillai Sasidharan visited the family of the late Robert Tan and presented the SMOU Death Benefit payout to his wife.

Robert Tan Wee Guan succumbed to pneumonia at the age of 92. He was an active participant in SMOU events when he was in good health. His family members are grateful that he had led a long and fulfilling life.

Kang Kok Leong was a meticulous man who started sailing from a young age. He accumulated a wealth of sea experience over the years doing what he loved. His wife shared that he was a brave and caring man. Kok Leong passed away due to cancer.



SMOU Executive Committee member Roy Lee presented the NTUC GIFT insurance payout to the wife of Kang Kok Leong.

Don't Slip Up

Some of the most typical accidents on board ships can be prevented with common sense and adherence to safety procedures.

The most common accidents that lead to shipboard injuries are slips, trips and falls.

All seafarers know that a ship moving in a seaway is drastically different from a shore-based work environment. When at sea, injuries from slips, trips and falls are quite common, and can be treated by simple first aid. However, many of these accidents could be prevented.

A good first step is to understand the root causes of slips, trips and falls.

Root of the problem

Poor onboard housekeeping, not complying with safety procedures, not applying hard-won training and experience, and cutting corners by prioritising expediency of job over safety.

The problem in part can be attributed to a lax safety culture on board some ships, which in turn leads to individuals neglecting or disregarding safety measures.

The remedy must start with shore management, which should enforce a zero-tolerance policy towards unsafe practices. Compliance with safety procedures should also be verified during company internal audits. The proper investigation of accidents and near misses, identifying lessons learnt and applying them will also assist in shoring up standards and make it clear to crew what is expected of them.

There is significant room for improvement in crew safety training, hazard awareness, adherence to industry best practice, and management procedures.

Shore management can provide crews with active support, particularly by supplying appropriate onboard training and educational tools.

Fatigue plays a major role in reducing a seafarer's alertness and increases the chances of human error and personal injury.

Dealing with human element is a key part of overcoming this challenge.

Play your part

Raising crew awareness of trip and head-height hazards can be assisted by conspicuously marking obstructions, changes of deck height, steps, and inclines with high visibility paint or 'tiger stripes', 'watch your step' labels and **strategically placed warning and instruction notices**. Where openings are created in decks during operations or repairs, it is vital to fence them off and marked. Familiarising oneself with trip



and head-height hazard areas and always staying alert is vital – a sign is of no use to crew members who are not looking where they are going.

Proper familiarisation training and mentoring should be provided, especially for first voyage and junior crew. Ensure that safety management system procedures for safe operations and working practices are strictly adhered to, including the completion of appropriate risk assessments and permits to work.

There should be a **culture of open reporting** of near misses. Statistics show that there is a strong correlation between the number of near-miss reports submitted and the number of accidents experienced by individual vessels. The more reports produced, the fewer the accidents. Ship managers can put a system in place where crew of all ranks can freely report near misses on board, by using an anonymous drop-box facility. To complete the loop, management and senior officers should ensure corrective action is taken and that lessons learnt are communicated throughout the fleet.

Crew members should **keep their eyes and ears open** to potential hazards and report and rectify them as soon as possible. When they observe shipmates neglecting safety procedure or taking shortcuts, they must speak up.

Personal protective equipment is a seaman's friend – make sure it is readily available, kept in good condition, and used.

Exercise good housekeeping such as keeping decks free of obstructions, working areas clean, and ensuring that stores and equipment are well stowed and secured. Regularly used walkways, ladders and working areas including mooring decks, should have non-slip coatings to provide a good foothold. Internal and external areas should be well lit for safe access and any defective light fittings rectified promptly.

Finally, prevention of accidents on board ships is not rocket science: use common sense, set an example, remember your training, and you will help to keep everyone safe and accident free.



*Excerpts from IHS Safety at Sea,
September 2017*

SINGAPORE MARITIME OFFICERS' UNION (SMOU) SEAFARERS' PROVIDENT FUND (SPF)

To all officers who served on board vessels covered by
SMOU Collective Agreement before 2012.

SINGAPORE MARITIME OFFICERS' UNION
75 Jellicoe Road, #03-01, Wavelink Building, Singapore 208738
Tel: 6396 0123 Fax: 6339 5436 Website: www.smou.org.sg

Request to Withdraw SMOU (Officers) Seafarers' Provident Fund

I / We hereby apply to receive SMOU (Officers) Seafarers' Provident Fund under the Scheme of Administration.

IMPORTANT
Please write clearly and provide correct and complete information as incomplete withdrawal form will delay the application process. Please
enclose copies of both certificate, new & old passports, seafarer's handbook, bank book/statement and any other form of identification for
verification. *See reversal for documents required.

Particulars of Member

SMOU NUMBER		
MEMBER'S NAME (PRINT)		THRIFT NUMBER
MEMBER'S ADDRESS		
PORT NUMBER		
EMAIL ADDRESS		DATE OF BIRTH
COMPANY'S NAME		CONTACT NUMBER

Member's Bank Details

A) TELEGRAPHIC TRANSFER TO OVERSEAS BANK ACCOUNT (bank charges apply)
BANK'S SWIFT CODE (mandatory field) BANK BRANCH / STATE (if any)
 B) TELEGRAPHIC TRANSFER TO LOCAL (SINGAPORE) BANK ACCOUNT

The SPF has been terminated since
30th June 2012.

**Act now and submit your SPF
withdrawal application before
1st December 2021!**

Download the SPF withdrawal
application form @ www.ispf.org.sg

ATTENTION!



Contact us at
spf@wavelink.com.sg
for SPF enquiries and
withdrawal submission.

Brought to you by:



SINGAPORE

Wavelink Thrift Pte Ltd

75 Jellicoe Road #03-01 Wavelink Building Singapore 208738 • Tel: +65 6390 1661 • Email: spf@wavelink.com.sg

PHILIPPINES

SMOU Representative Office

7th Floor S & L Building 1500 Roxas Boulevard Ermita Manila Philippines • Tel: +63 400 5459 • Email: SMOUMNL@wavelink.com.sg



Like & Share our facebook page at <https://www.facebook.com/Wavelinkthrift/>
with your seafaring friends who may have SPF.



Training Calendar

Year 2018 Wavelink Maritime Institute Monthly Short Courses (Singapore)

Courses	Duration	Course Fee (S\$)	Feb	Mar	Apr	May	Jun	Jul	Aug	Sep	Oct	Nov	Dec
STCW Courses													
Bridge Resource Management - Leadership and Teamwork (Management Level)	5 Days	1605.00		12 - 16	09 - 13	14 - 18	18 - 22	09 - 13	27 - 31	10 - 14	08 - 12	19 - 23	10 - 14
Engine-room Resource Management - Leadership and Teamwork (Management Level)	5 Days	1605.00	19 - 23	12 - 16	09 - 13	14 - 18	18 - 22	09 - 13	27 - 31	10 - 14	08 - 12	19 - 23	10 - 14
Bridge Resource Management - Leadership and Teamwork (Operational Level)	3 Days	963.00	26 - 28	12 - 14	09 - 11	14 - 16	18 - 20	09 - 11	27 - 29	10 - 12	08 - 10	19 - 21	10 - 12
Engine-room Resource Management - Leadership and Teamwork (Operational Level)	3 Days	963.00	19 - 21	12 - 14	09 - 11	14 - 16	18 - 20	09 - 11	27 - 29	10 - 12	08 - 10	19 - 21	10 - 12
IMO Model Course 1.27 - Operational Use of ECDIS	5 Days	1230.50	05 - 09	19 - 23	02 - 06	07 - 11	04 - 08	02 - 06	13 - 17	03 - 07	01 - 05	12 - 16	03 - 07
IMO Model Course 3.19 - Ship Security Officer	2 Days	642.00		27 - 28		02 - 03		24 - 25		25 - 26		27 - 28	
Basic Occupational Safety & Survival Training	10 Days	1337.50					Please check with WMI on available dates						
Proficiency in Designated Security Duties	1 Day	321.00		09		30		19		28		30	
Proficiency in Security Awareness Training	0.5 Day	192.60		09		30		19		28		30	
High Voltage Training (Operational Level)	3 Days	1551.50					Please check with WMI on available dates						
High Voltage Training (Management Level)	5 Days	2568.00					Please check with WMI on available dates						

Maritime Courses													
Type Specific ECDIS - TRANSAS/ MARIS/ Tokyo Keiki	2 Days	770.40					Please check with WMI on available dates						
ECDIS Conversion - Applicable to those who have done ECDIS before (2012)	3 Days	706.20	05 - 07	05 - 07	02 - 04	07 - 09	04 - 06	02 - 04	13 - 15	03 - 05	01 - 03	12 - 14	03 - 05
Familiarisation on Operational Use of ECDIS	2 Days	535.00	05 - 06	05 - 06	02 - 03	07 - 08	04 - 05	02 - 03	13 - 14	03 - 04	01 - 02	12 - 13	03 - 04
Promotion in Rank (Supervisory Level) / SOLAP - Suitable for Chief Officer in the position of promotion	3 Days	2568.00	28 Feb - 02 Mar	21 - 23	18 - 20	15 - 17	27 - 29	18 - 20	15 - 17	19 - 21	17 - 19	28 - 30	19 - 21
Promotion in Rank (Supervisory Level) / SELAP - Suitable for Senior Engineer in the position of promotion	3 Days	2568.00	21 - 23	14 - 16	11 - 13	16 - 18	20 - 22	11 - 13	29 - 31	12 - 14	10 - 12	21 - 23	12 - 14
Train The Trainer (Shipboard Operations)	3 Days	963.00	26 - 28	19 - 21	16 - 18	21 - 23	25 - 27	16 - 18	06 - 08	17 - 19	15 - 17	26 - 28	17 - 19
Command Navigation - Suitable for Senior Deck Officer	3 Days	1605.00	26 - 28	19 - 21	16 - 18	21 - 23	25 - 27	16 - 18	06 - 08	17 - 19	15 - 17	26 - 28	17 - 19
Bridge Team Management	3 Days	1177.00					Please check with WMI on available dates						
Engine Team Management	3 Days	1177.00					Please check with WMI on available dates						
Promotion in Rank (Operational Level) - Suitable for Junior Deck / Engineer Officer	5 Days	1605.00	19 - 23	12 - 16	09 - 13	14 - 18	18 - 22	09 - 13	27 - 31	10 - 14	08 - 12	19 - 23	10 - 14
IMO Model Course 3.20 - Company Security Officer	3 Days	963.00		27 - 29		02 - 04		24 - 26		25 - 27		27 - 29	
IMO Model Course 3.21 - Port Facility Security Officer	3 Days	963.00	06 - 08		03 - 05		05 - 07	31 Jul - 02 Aug			02 - 04	20 - 22	
Ship Safety Officer	2 Days	642.00					Please check with WMI on available dates						
ISM & ISPS Internal Auditor Course	3 Days	1284.00		06 - 08		08 - 10		03 - 05		04 - 06		13 - 15	
ISM Internal Auditor Course	2 Days	695.50		06 - 07		08 - 09		03 - 04		04 - 05		13 - 14	
ISPS Internal Auditor Course	2 Days	856.00		06 - 08		09 - 10		04 - 05		05 - 06		14 - 15	

Course fees and dates may be subjected to changes without prior notice. All course fees are inclusive of 7% Goods and Services Tax. **Tel: (65) 6796 9651 Fax: (65) 6569 3268 Email: courses@wavelink.com.sg**

WMI Courses accredited by ClassNK

Congratulations

Eight Wavelink Maritime Institute (WMI) courses have received a stamp of approval from ClassNK (Nippon Kaiji Kyokai), a ship classification society dedicated to supporting the development of the maritime industry by addressing the aspects of seafarer training.

After the assessment from ClassNK, the WMI courses were affirmed to offer quality maritime training that conform to relevant international standards.

The Certificate of Maritime Education & Training under ClassNK is issued to the following courses:

1. **Basic Occupational Safety and Security Training (BOSST)**
2. **Bridge Resource Management (BRM)**
3. **Engine-room Resource Management (ERM)**
4. **Bridge Team Management (BTM)**
5. **CadetsPlus**
6. **Ship Safety Officer Course**
7. **Basic Tanker Training**
8. **Train the Trainer for Shipboard Operations**

The certification is valid till 27 August 2020.



Shipping companies looking to enrol their officers in the above courses may contact WMI at:
Tel: (65) 6796 9651 Fax: (65) 6569 3268 Email: courses@wavelink.com.sg

Upcoming course dates can be found in the WMI training calendar (see page 30).

Taking CadetsPlus to the Next Level

The CadetsPlus programme is an SMTF initiative that seeks to improve the capabilities of new maritime officers and engineers.

With the introduction of Global Campus, CadetsPlus, which originally spanned three weeks, is now being offered as a two-week course comprising face-to-face training. Through this e-portal, cadets from various countries can benefit from continuous shipboard engagement and communication with WMI facilitators for a year.

With the support of Wavelink Maritime Institute's (WMI) Global Campus, a new



A screenshot of WMI's Learning Management System.

variant of the CadetsPlus programme – 10-day face-to-face training supported with an online learning portal which utilises the Learning Management System (LMS) and Community of Practice (CoP) to deliver quality maritime

education will make its debut soon. This new format has been launched in Taiwan early this year.

Additionally, WMI is also embarking on company-specific CadetsPlus, with the support of SMTF. The company specific CadetsPlus will be an eight-day programme that incorporates customised discussions on communication, work operations and onboard safety. Shipping companies can engage participants at their preferred locations.

Course fees will be fully subsidised by the Singapore Maritime Training Fund (SMTF).



The delegates, including WMI Chief Integration Officer Capt Yeow Kok Kean (3rd row, left most) who attended the Pan-Yangtze River Delta Port and Shipping International Vocational Education Group Conference.

WMI Explores Collaborations in China

Wavelink Maritime Institute (WMI) is exploring opportunities to tap on China's Belt and Road Initiative (BRI) – a development strategy that focuses on connectivity and cooperation amongst countries to enhance the quality and quantity of maritime support, financial, banking, technological, legal and arbitration services.

Representing WMI, Chief Integration Officer Capt Yeow Kok Kean participated in the Pan-Yangtze River Delta Port and Shipping International Vocational Education Group (YRDPSEVG) Conference on 14 and 15 October 2017.

The conference, which was attended by representatives from the local Ministry of Education; maritime authorities; shipping, port and logistic companies; training centres and colleges; and invited international collaboration partners, highlighted the significance of technology, applied learning and industry relevance in vocational training for the port and maritime industry.

WMI also met up with the Deputy Party Secretary Zhao Lehui, Dean of School of Nautical Studies and School of Marine Engineering, during a visit to Guangzhou Maritime University (GMU) in December. The team toured GMU's simulation centre and Capt Yeow shared his insights on working onboard in a multi-national environment with the university's graduating cohort.



Job Fair for TETA Cohort 3

For candidates looking to join the 3rd cohort of the Tripartite Engineering Training Award (TETA) Programme, the final step to training commencement entailed pre-assessments and interviews by shipping companies at the Job Fair held on 6 December 2017 at the Devan Nair Institute. Fuelled by their hopes and aspirations, they gave their all to impress their prospective employers.



“ *Being a seafarer is an experience like no other. I'm glad that my efforts have paid off and I look forward to embarking on this fruitful career.*

▲ Deepan Ravindran, employed by Pacific International Lines



“ *I've a passion for machinery and the sea, so the TETA is a good stepping stone for me to enter the industry. I believe a bright future with ample opportunities await.*

◀ Chan Wai Kit, employed by Grindrod Shipping

Lighthouse Bistro

The place to be



Lighthouse Bistro has always been serving seafaring members, distressed seafarers, the maritime community and the general public with an array of innovative fusion cuisine since 2003. 15 years on, it continues to hold a special place in the hearts of many.

One heartwarming example was a special class gathering for a cohort of marine engineers. Naming their gathering Mariner 55, to represent their ages, the event was a milestone for the Singapore Polytechnic alumni. There was great food, photobooth, caricatures, guzheng performance, birthday cake cutting and lucky draw, thoroughly enjoyed by over 65 former seafarers, their family members and ex-lecturers.



*Photos are for illustration purpose only



Nice and cosy place to eat. The promotions here are good. We will definitely come back again!

- Kelvin Lee

Friendly staff, simple and nice festive setup and the food was good. Well done!

- Soh Geok Choo

Excellent turkey! Not dry at all. Amazing attention to ingredients. Everything was fresh. We had a wonderful dinner. Thank you for planning such a superb menu!

- Benny

The staff were friendly. The food was good. Thank you for the enjoyable dinner.

- Seki Loh

All good! Five stars for the food, drinks, service and the dining experience!

- Vasanthi

Well done to the Lighthouse team! Keep it up!

- Michael Pay

20% discount* - SMOU members
15% discount* - NTUC members

* Applicable for a la carte menu only
 Prices exclude GST & service charge



Follow Lighthouse Bistro



75 Jellicoe Road, Wavelink Building, #01-00, Singapore 208738 | 6390 1699

www.lighthouse-sg.com

ITF 44th Congress

SiNG→APORE



The International Transport Workers' Federation's (ITF) 44th Congress is coming to Singapore! The quadrennial congress involves ITF unions coming together to make important decisions, such as putting into place priorities and action plans for the next four years – that set the direction for the future of the global trade union movement.

19 MILLION
transport workers
700 UNIONS

FIRST TIME
IN 122 YEARS
it is being held in
Southeast Asia

150 COUNTRIES
around the world

14 - 20 Oct 2018
Suntec
Singapore
Convention
&
Exhibition Centre

The ITF Singapore National Coordinating Committee (SNCC) comprises five unions.



Look out for more updates as we countdown to ITF Congress Singapore!